



INDIAN INSTITUTE OF MANAGEMENT RANCHI



SUMMER PLACEMENT REPORT 2018-2020



FOREWORD

IIM Ranchi announces with great pride the successful completion of Summer Placement process for the Batch of 2018-20. The batch comprises 253 students, with 186 and 67 students enrolled in its PGDM and PGDHRM programmes respectively. The placement statistics stand as a testament to the immense confidence shown by recruiters in the skills and aptitude of the students and reaffirm IIM Ranchi's position as one of the leading management institutes in the country.

In addition to the regular recruiters who have continued to show immense faith in our students for building future leadership, summer placements also saw 65 first-time recruiters, reiterating the ever-increasing confidence that the industry has on the talent offered by IIM Ranchi. There was a substantial increase in the number of offers made by the regular recruiters. Also, the average stipend has witnessed a rise of 6.45% and 10.06% for PGDM and PGDHRM batches respectively over the last year.

We thank all the stakeholders involved, including recruiters, faculty members, alumni, students and staff for ensuring such laudable completion of the Summer Placement Season this year.



STUDENT PROFILE

IIM Ranchi maintains its tradition of attracting students from across the country, from varied fields and disciplines ranging from Engineering to Human Resources, including Commerce, Pharmacy, Mathematics and Accounting. With 42% female students, the gender ratio continues to be one of the highest among the premier B-Schools in the country. More than 76% of the batch comes with prior work experience in organizations such as BNY Mellon, Bosch, Deloitte, Ernst & Young, Fractal Analytics, Futures First, IBM, Mu Sigma, Nestle, PayPal, Tata Motors, Tech Mahindra and ZS Associates.

BATCH SIZE : 253

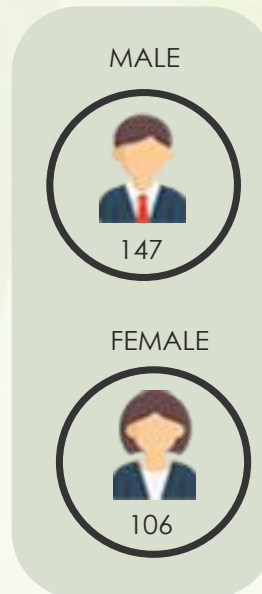


PGDM BATCH SIZE - 186



PGDHRM BATCH SIZE - 67

■ FRESHERS
 ■ 1-11
 ■ 12-23
 ■ 24-35
 ■ >36



PLACEMENT SNAPSHOT

HIGHEST STIPEND - Rs. 4,00,000

AVERAGE
Rs. 90,830
MEDIAN
Rs. 70,000

TOP 25%
Rs. 1,71,587
TOP 10%
Rs. 2,17,811

P
G
D
M



106

COMPANIES
ASSOCIATED
WITH



65

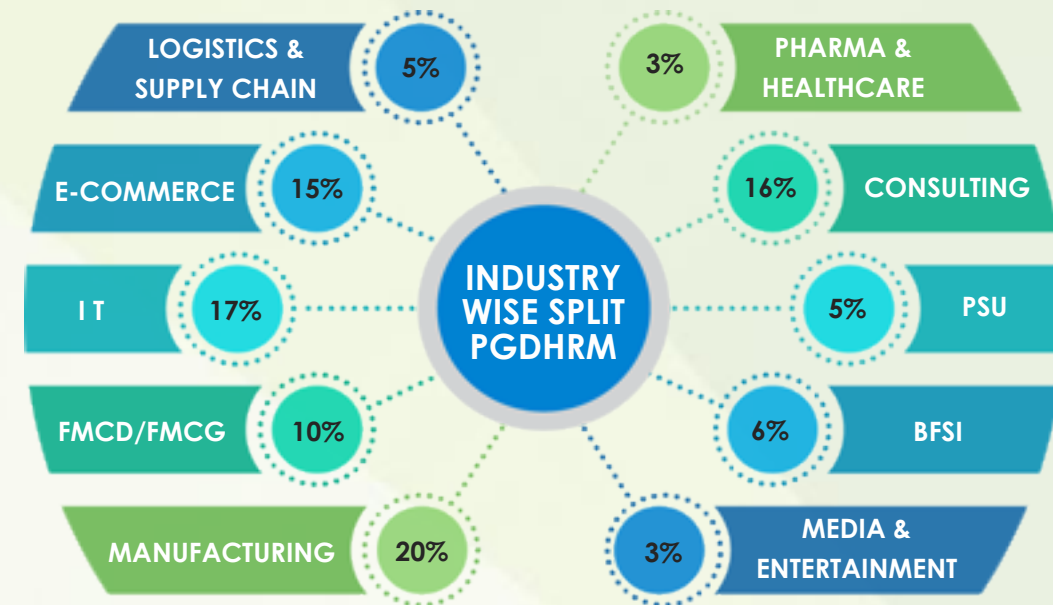
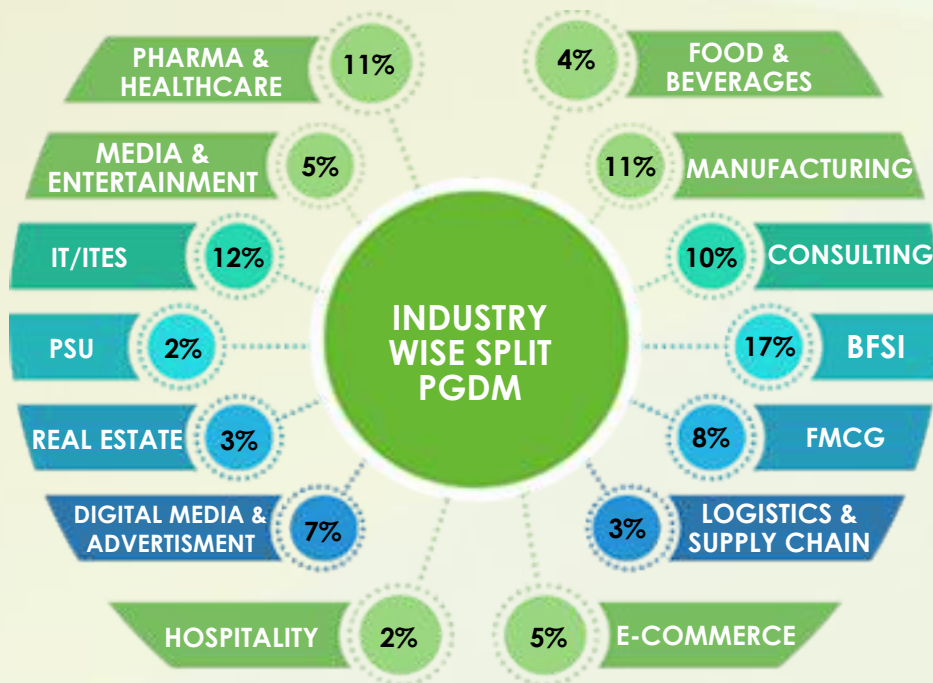
NEW RECRUITERS

HIGHEST STIPEND - Rs. 2,80,000

AVERAGE
Rs. 95,152
MEDIAN
Rs. 80,000

TOP 25%
Rs. 1,65,788
TOP 10%
Rs. 2,10,600

P
G
D
H
R
M



PGDM HIGHLIGHTS

SALES & MARKETING

Prominent Recruiters: Allergan, Bosch, Berger Paints, Cipla Health, HP, ICICI Lombard, Sanofi Genzyme, Sony, Titan, Ultratech, Value Labs
Roles Offered: Digital & Social Media Marketing, Business Development, Market Research & Intelligence, Product Marketing

FINANCE

Prominent Recruiters: Angel Broking, Bajaj Finserv, Goldman Sachs, ICICI Bank, L&T Finance, Motilal Oswal, Muthoot, RBL Bank
Roles Offered: Risk Analysis, Liabilities Management, Investment Research, Corporate Finance, Equity Research

STRATEGY & CONSULTING

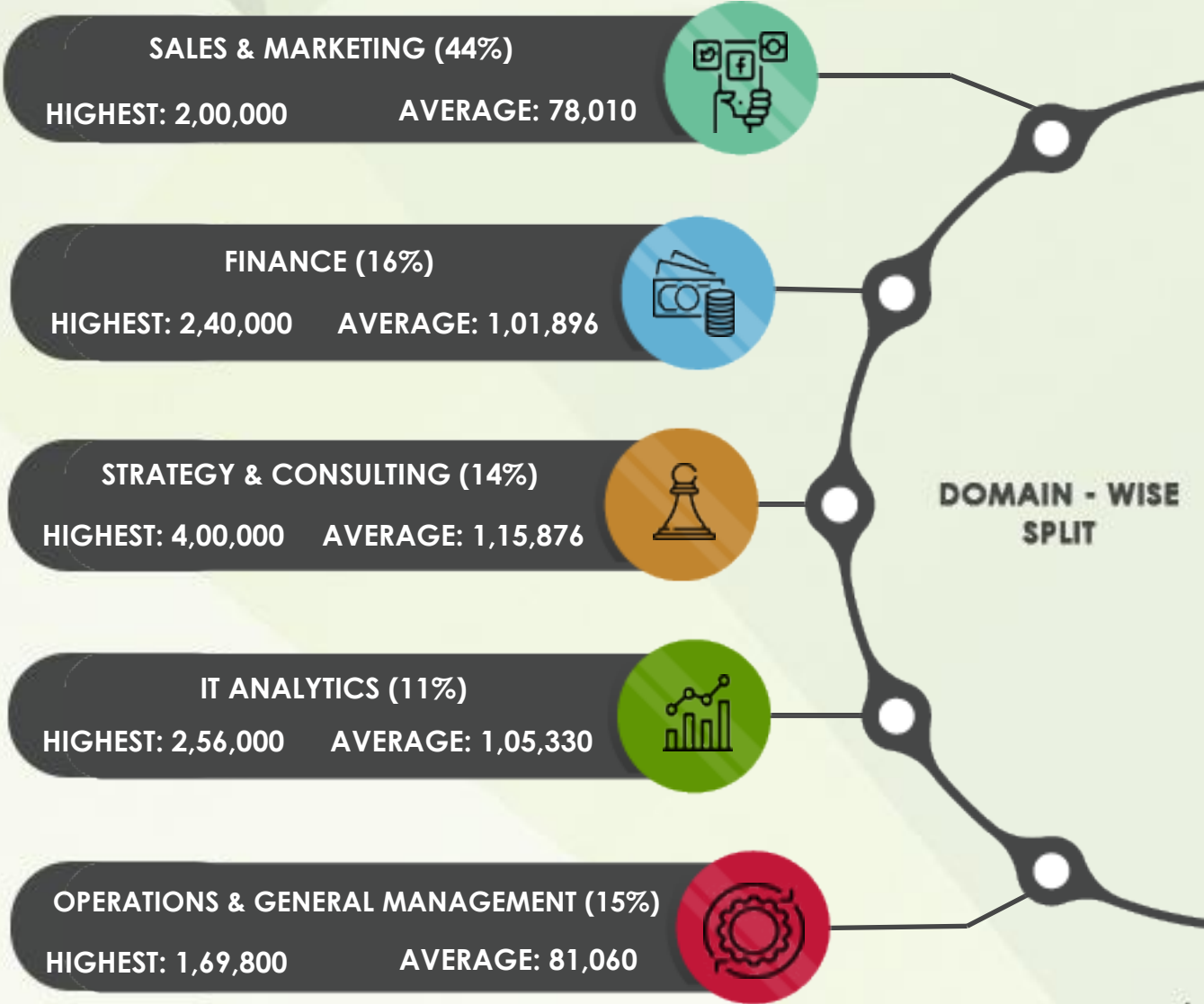
Prominent Recruiters: Bosch, Conduent Business Solutions, Microland, Media.Net, Patanjali, RPG Group, Samsung R&D, YES bank
Roles Offered: Strategy & Consulting, Business Development, Corporate Strategy & Planning, Tech Strategy & Analytics

OPERATIONS & GENERAL MANAGEMENT

Prominent Recruiters: BPCL, Cummins, Hikal, JSPL, Sutherland Global Services, TATA Steel, Ultratech, Vedanta
Roles Offered: Operations Analytics, Strategic Sourcing, Supply Chain & Procurement, Operations Analytics

IT & ANALYTICS

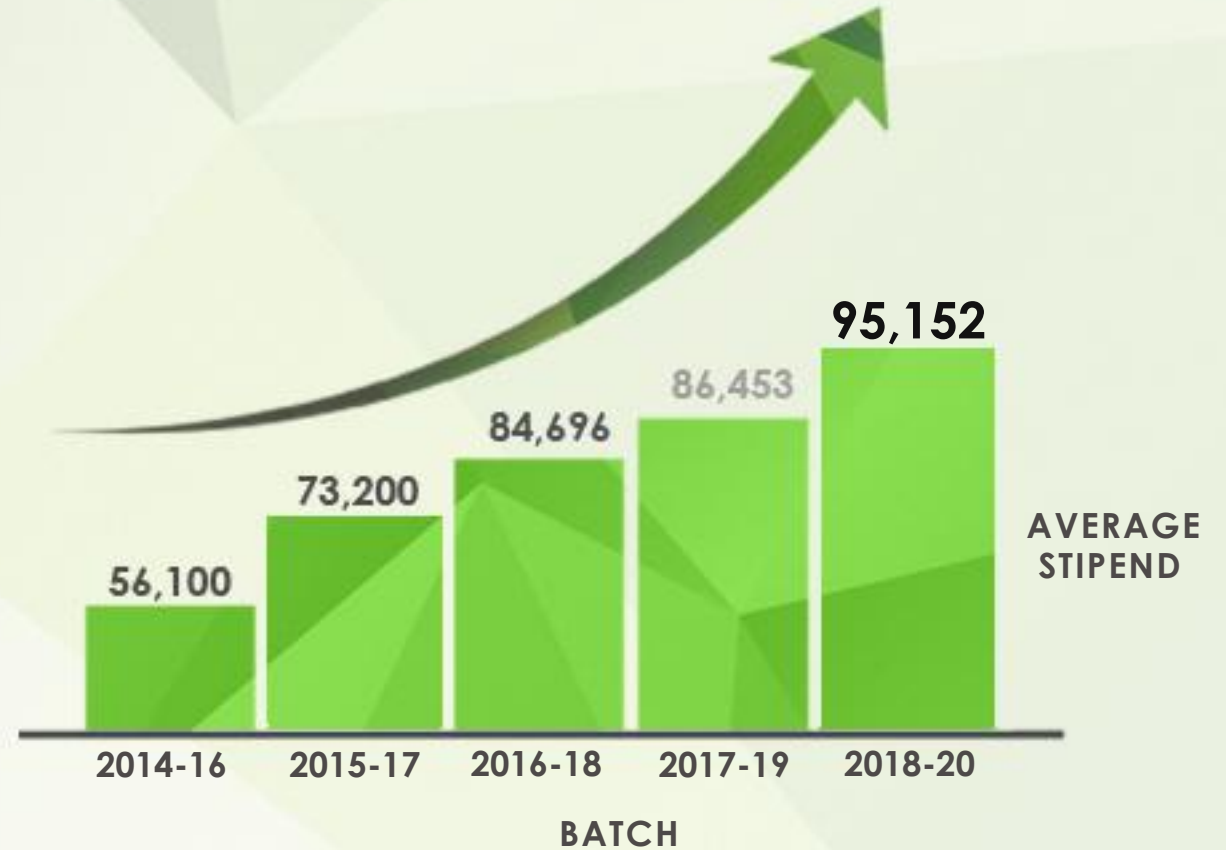
Prominent Recruiters: ACG Worldwide, American Cybersystems, Bosch, Capgemini, ICICI Lombard, RPG Group, Tradeindia, Value Labs
Roles Offered: Product Management, Business Intelligence, Data Analyst, Business Analyst, Product Analyst



PGDHRM HIGHLIGHTS

The PGDHRM programme continues to attract some of the major players from the industry. Alongside strengthening our association with prominent brands such as BPCL, Cognizant, Deloitte, L&T, Samsung R&D, Sony Pictures Network, to name a few, a number of new recruiters have also participated in this season. In all, 33 firms have recruited from the PGDHRM batch of 2018-20.

PROMINENT ASSOCIATIONS



ROLES OFFERED

HR Generalist, Industrial Relations, Learning & Development, Corporate Social Responsibility & Sustainability, Talent Acquisition, Change Management, HR Analytics

PROMINENT ASSOCIATIONS



FROM THE DIRECTOR'S DESK

We are nine years young and a proud member of the IIM family established by the Ministry of Human Resource Development, Government of India. At IIM Ranchi, we believe that excellence is not a destination, but a journey, in which we are making impressive strides. I am happy to announce that we have crossed the mark of one thousand distinguished alumni contributing to nation-building while working in government, international agencies, private and public sector and as entrepreneurs. Our faculty members are luminaries from industry and academia. The time-tested case-based pedagogy and academic curriculum followed at IIM Ranchi are regularly upgraded to enhance the knowledge and lateral thinking capabilities of our students, while keeping them abreast of the current industry standards and requirements.

Our students have made their presence felt in various avenues, be it academics, sports, placements or extracurricular activities. We have been rapidly gaining ground by proactively evolving with the changing business ecosystem around us. Students are educated not just to be industry-ready managers and future leaders, but are also nurtured to be humble citizens and symbols of hope in the society.

Let us embark upon a journey of mutual growth, a journey that further invigorates our long-term associations, where our students get the opportunity to exhibit their skills and expertise, thereby adding value to the organization and society through this synergetic partnership.



With Best Wishes

Prof. Shailendra Singh

Director, IIM Ranchi

PLACEMENT COMMITTEE



P. VIGNESH

SARANSH
RANJAN

PREYAS
MESHAM

KARAN
BHAGAT

BIDUSHI NANDY

MEGHA DESAI

VINAY BUCHASIA

SAMUJJWAL
BARUAH

NIDHI
GANDHI

BHAWANA
PRABHAKAR

PAYAL
ARORA

Address:

Fifth Floor, Suchana Bhawan,
Audrey House Campus, Meur's Road,
Ranchi, Jharkhand 8340081

Email:

pgp.placement@iimranchi.ac.in

Phone:

+91 651 2280113



Fax:

+91 651 2280940



LinkedIn:

in.linkedin.com/in/corporaterelationsiimranchi